

aqua HT 1300

40.00

High Temperature Oven for AQUA 40.00

Product description

The high temperature oven HT 1300 is an extension module with high performance for the Karl Fischer titrator AQUA 40.00 for extracting the water from samples which release the water at higher temperatures (300 to 1300 °C). Therefore, chemical reactions forming water as a reaction product can be controlled. Samples are put into small sample boats into the hot area of the oven. A special valve system transports the sample into the oven without interrupting the carrier gas flow.

In the inert gas flow, the water is completely released from the sample and transferred via the connection module to the measuring cell of the AQUA 40.00 Basic Module.

Due to the two-stage pre-drying of the inert transport gas in the integrated drying tower a very low background drift is achieved.



High temperature oven HT 1300 for Karl Fischer titrator AQUA 40.00

Applications

Water determination in solid, pasty and liquid samples at heating temperatures up to 1300 °C, e. g.

- Inorganic salts
- Building materials
- Metals and alloys
- Molecular sieves
- Oxides/hydroxides
- Cement

Advantages

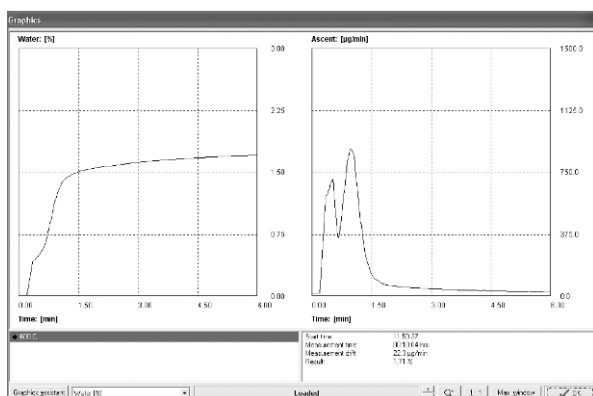
- No sample pre-treatment necessary
- Short measurement time
- Easy to operate manual feeder
- AQUA 40.00 software with extension to control high temperature oven



AQUA 40.00 Basic Module with connection module and high temperature oven HT 1300

Features and Results

- High temperature heating for trace amounts of water
- Can be coupled directly with the AQUA 40.00 Basic Module
- Uniform software with integrated oven temperature control
- Sample supply in ceramic or quartz glass boats
- Gas supply nitrogen or argon
- Isothermal heating or temperature program



Water determination in zeolite (molecular sieve), heating at constant temperature ($T = 600\text{ }^{\circ}\text{C}$)



Sample dosing with boats of ceramic or quartz glass

Technical specifications

Heating temperature:	300 ... 1300 $^{\circ}\text{C}$
Sample amount:	Up to 3000 mg
Sample feeding:	Sample boats made of ceramic or quartz glass (depends on working temperature)
Carrier gas:	Nitrogen or argon
Temperature control:	From AQUA 40.00 software
Heating procedure:	Isothermal or temperature program, free adjustable
Dimensions:	HT 1300: 510 x 470 x 550 mm (W x H x D) Connection module: 150 x 450 x 200 mm (W x H x D)
Weight:	HT 1300: 22 kg Connection module: 3 kg
Power supply:	230 V, 50 ... 60 Hz

Book your online demo in the ECH Studio

ECH Scientific have a state of the art laboratory fitted with online presentation capabilities, allowing us to bring product demonstrations live and in full HD, with multiple camera angles and software sharing capabilities enabling us to deliver a full demo experience remotely. Please contact info@echscientific.com to book your session.

ECH Elektrochemie Halle GmbH

Otto-Eißfeldt-Str. 8
D-06120 Halle (Saale)
Germany

Tel.: +49 (0) 345 279570-0
Fax: +49 (0) 345 279570-99

Email: info@echscientific.com • www.ech.de • www.aquamaxkf.com

ECH Scientific Limited

Building 69, Wrest Park, Silsoe
Bedfordshire, MK45 4HS
United Kingdom

Tel.: +44 (0) 1525 404747
Fax: +44 (0) 1525 404848



the ECH advantage

in-lab | mobile | on-line | process